



A lot of Reforms...!!

HIGHLIGHTS OF REFORMS IN ENVIRONMENTAL SANITATION SECTOR

1985 /89	GTZ-AMA Waste Management Project/The Kumasi Sanitation Project, based on the Strategic Sanitation Planning concept and solid waste management studies initiated
1985	AMA-Waste Management Department officially inaugurated
1992	KMA – Waste Management Department started operations

HIGHLIGHTS OF REFORMS IN ENVIRONMENTAL SANITATION SECTOR

1991	Franchise Management of Public Toilets initiated and cesspit emptying privatised
1993	Local Government Act, 1993 (Act 462) passed – spelt out functions of local governments (Metropolitan, Municipal and District Assemblies)
1994	National Development Planning (System) Act, 1994 (Act 480)
1994	National Community Water and Sanitation Programme launched
1994	Community Water and Sanitation Project (CWSP-1) commenced
1994	Urban Sector Review carried out with recommendations for urgent focus on urban environmental sanitation



WASTECARE

Have services improved because of the reforms...?

HIGHLIGHTS OF REFORMS IN ENVIRONMENTAL SANITATION SECTOR

1994	Environmental Protection Agency (EPA) established by Act 490.
1995	Privatised Operations for waste collection and transport initiated by Tema Municipal Assembly
1994 - 1996	Local Government Urban Development Programs (Urban II, III, V) and Environmental Sanitation Project (UESP) series commenced
1998	CWSA established by Act of Parliament, Act 564
1998	Environmental Health and Sanitation Unit of Ministry of Health transferred to Ministry of Local Government and Rural Development

HIGHLIGHTS OF REFORMS IN ENVIRONMENTAL SANITATION SECTOR

1998	Strategic Investment Plan of NCWSP initiated by CWSA
1999	Environmental Sanitation Policy published by MLGRD
1999	GWSC converted into a 100% state owned limited liability, GWCL, to cater for urban water supply per Statutory Corporations (Conversion to Companies) Act 461 of 1993 as amended by LI 1648
2003	Financial Administration Act, 2003 (Act 654)
2003	The Local Government Service Act, 2003 (Act 656)



WASTECARE

Recent reforms for improve planning and management of resources ...?

HIGHLIGHTS OF REFORMS IN ENVIRONMENTAL SANITATION DEVELOPMENT

2003	Internal Audit Agency Act, 2003 (Act 658)
2003	Public Procurement Act, 2003 (Act, 663)
2004	Assessment of effectiveness of existing environmental sanitation policies
2006	Strategic Environmental Assessment (SEA) of water, and environmental sanitation polices implemented
2007	National Water Policy approved by cabinet and published by MWRWH
2008	Strategic Investment Plan for NCWSP revised to cater for MDG targets

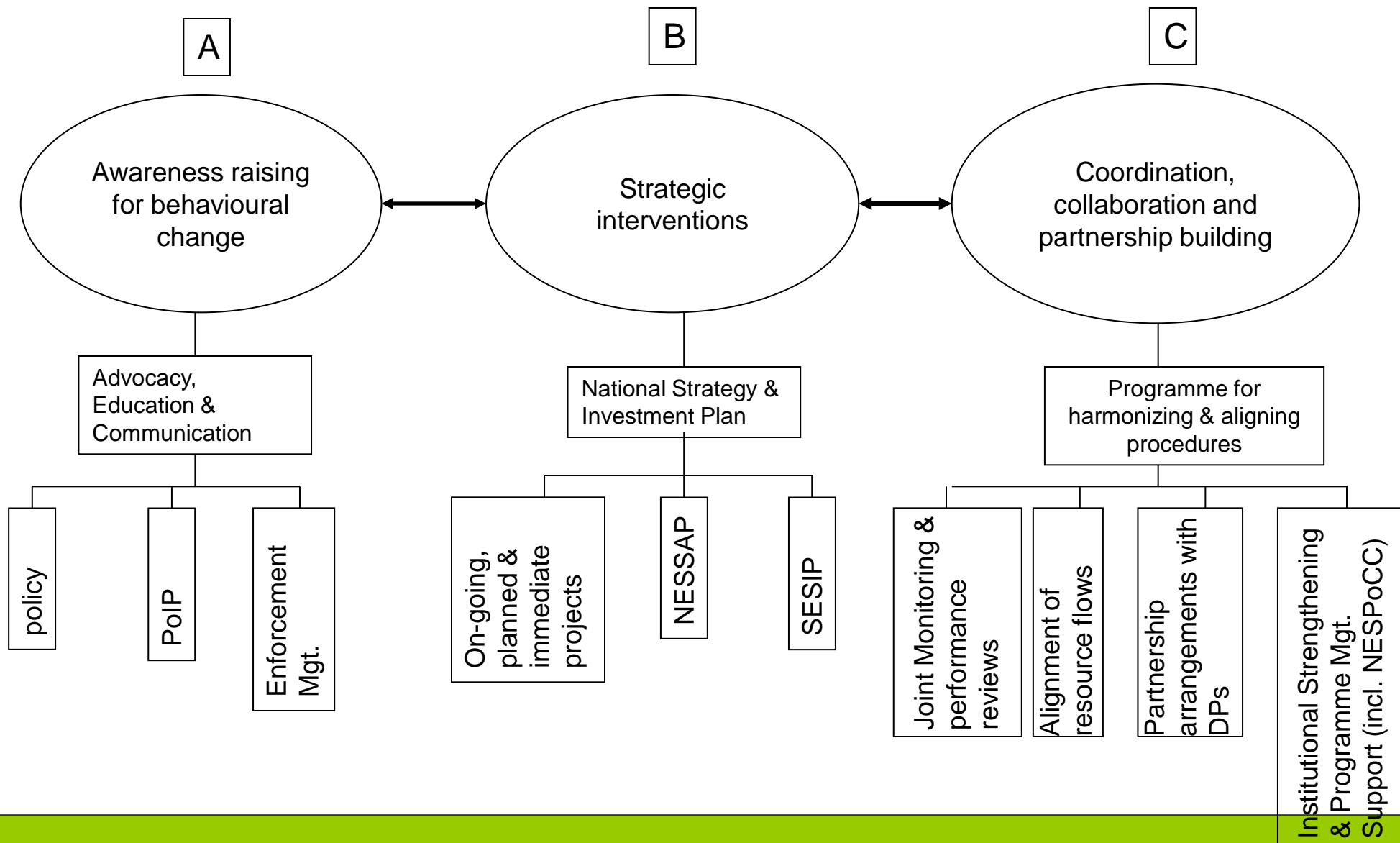
HIGHLIGHTS OF REFORMS IN ENVIRONMENTAL SANITATION DEVELOPMENT

2008	Environmental Health and Sanitation Unit upgraded to Directorate
2009	Local Government (Departments of District Assemblies) (Commencement) Instrument, 2009 (L.I. 1961)
2009	Environmental Sanitation Policy revised, approved by cabinet in March 2010
2010	National Environmental Sanitation Strategy and Action Plan (NESSAP) and Strategic Investment Plan (SESIP) initiated



WASTECARE

FRAMEWORK FOR ENVIRONMENTAL SANITATION DEVELOPMENT IN GHANA



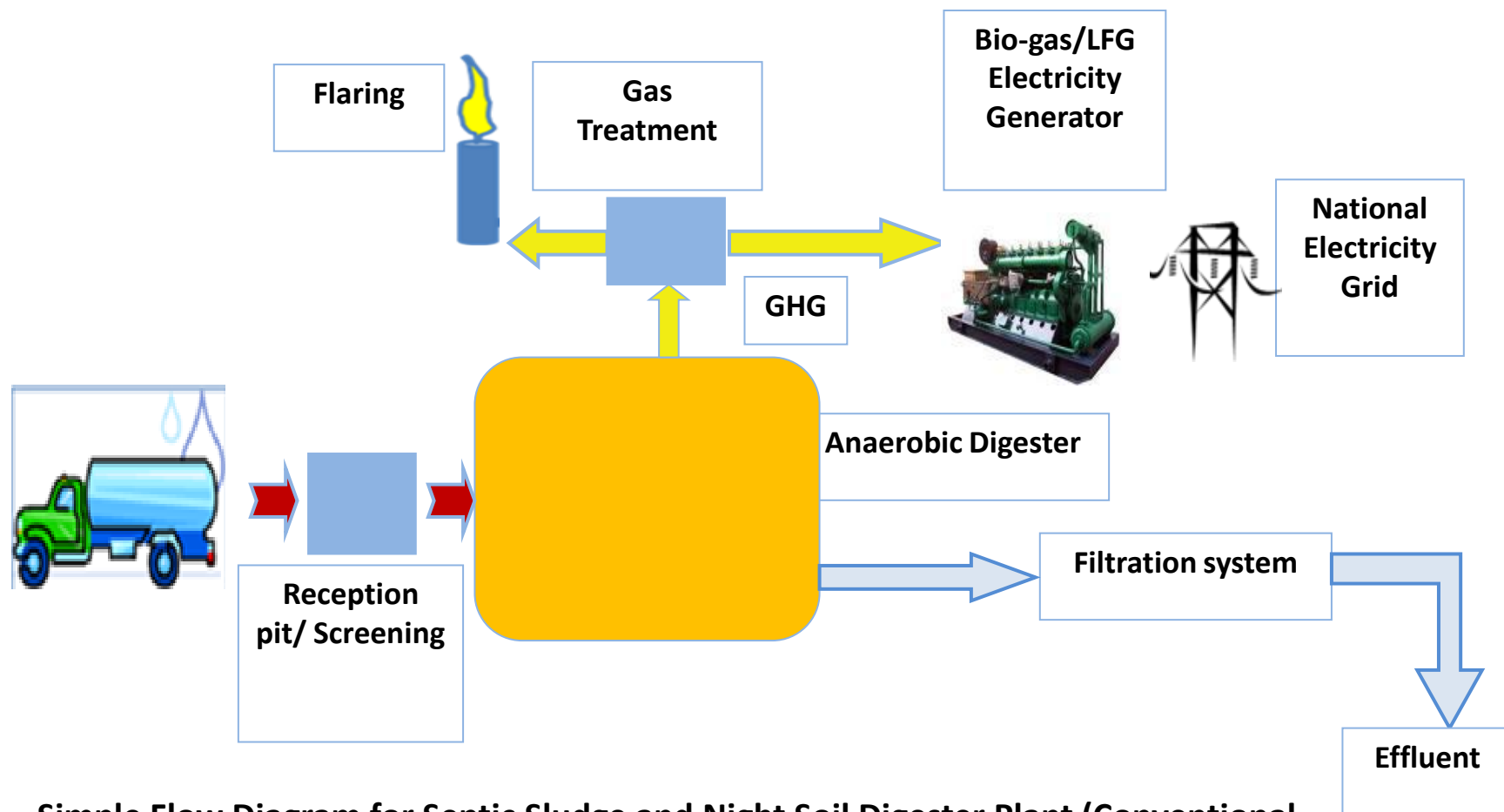
Aerial View of the KMA Septage Treatment Facility



Chocked-up Initial Anaerobic Ponds



Anaerobic digestion of BOF of solid waste and excreta generated LFG/Biogas for energy generation...



Simple Flow Diagram for Septic Sludge and Night Soil Digester Plant (Conventional Anaerobic Digestion Process)

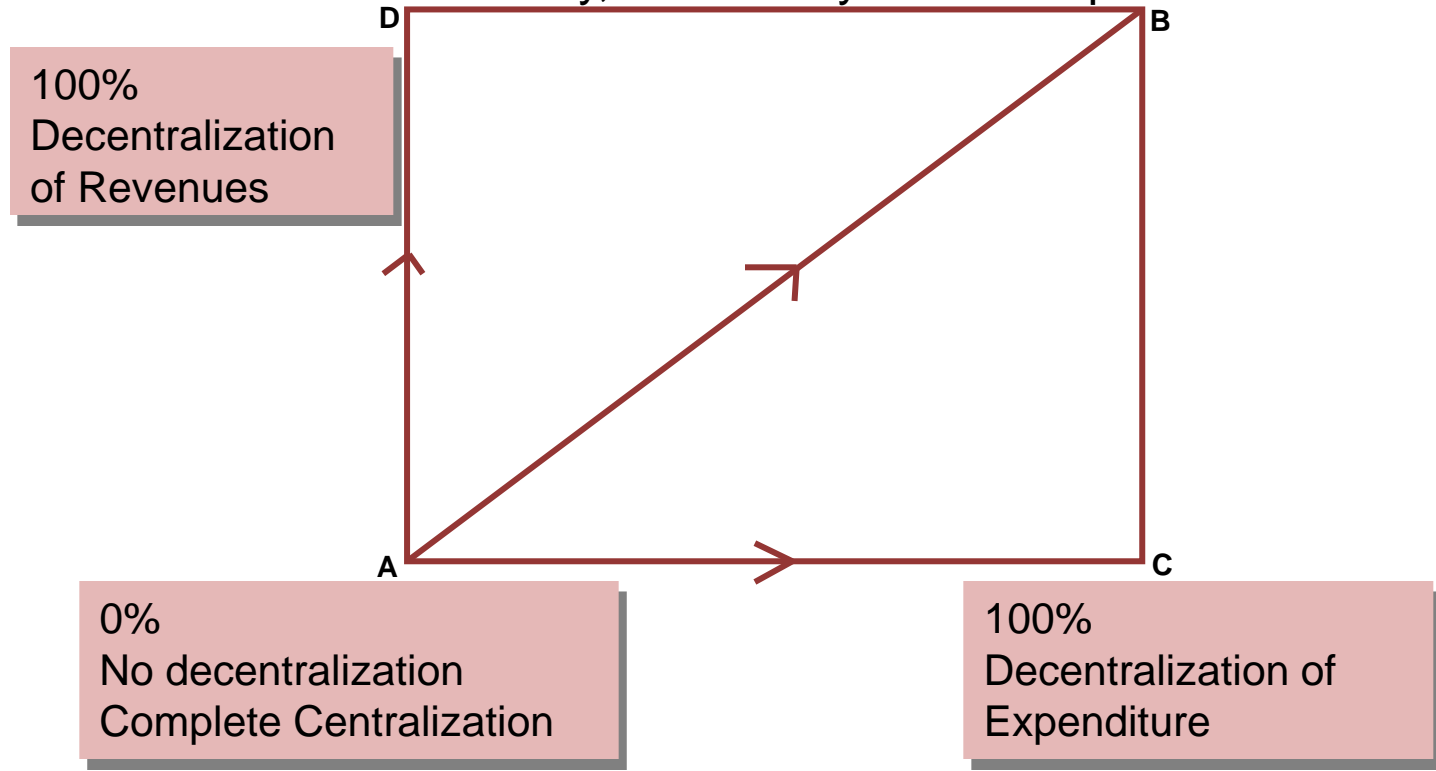
Up-hill view-Kpone Disposal Site-TMA



In-view: Proposed Incinerator for Bio-medical Waste buried in waste heap.



Correlation between Resource Availability, inefficiency and Corruption



In the Graph:

- A = Complete Centralization
- B = Complete Decentralization
- C = Centralized Resources and Decentralized Functions
- D = Decentralization Resources and Centralized Functions

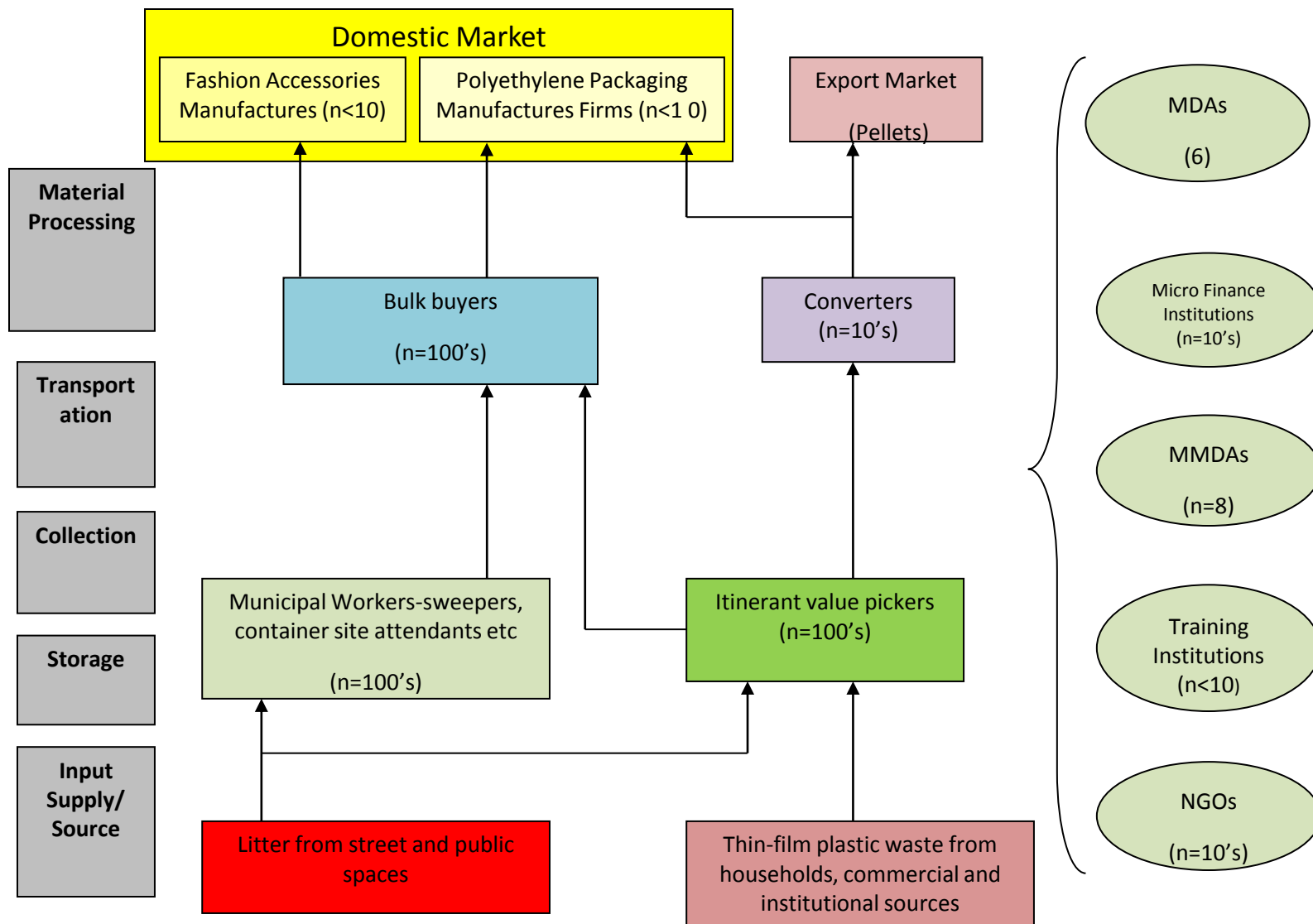
Source: Kwamena Ahwoi (Local Government & Decentralization in Ghana)

The situations of A and B are rare in the real world. The situations that are normally found in the real world are C and D, that is “centralized resources and decentralized functions” and “decentralized resources and centralized functions”. C breeds inefficiency while D breeds corruption. In other words, where more finances are transferred than there are functions, the excess finances are dissipated. That scenario breeds corruption. Where less finances are transferred than there are functions, the functions cannot be performed. That scenario breeds inefficiency. Finances and functions must therefore always be in a state of equilibrium.



WASTECARE

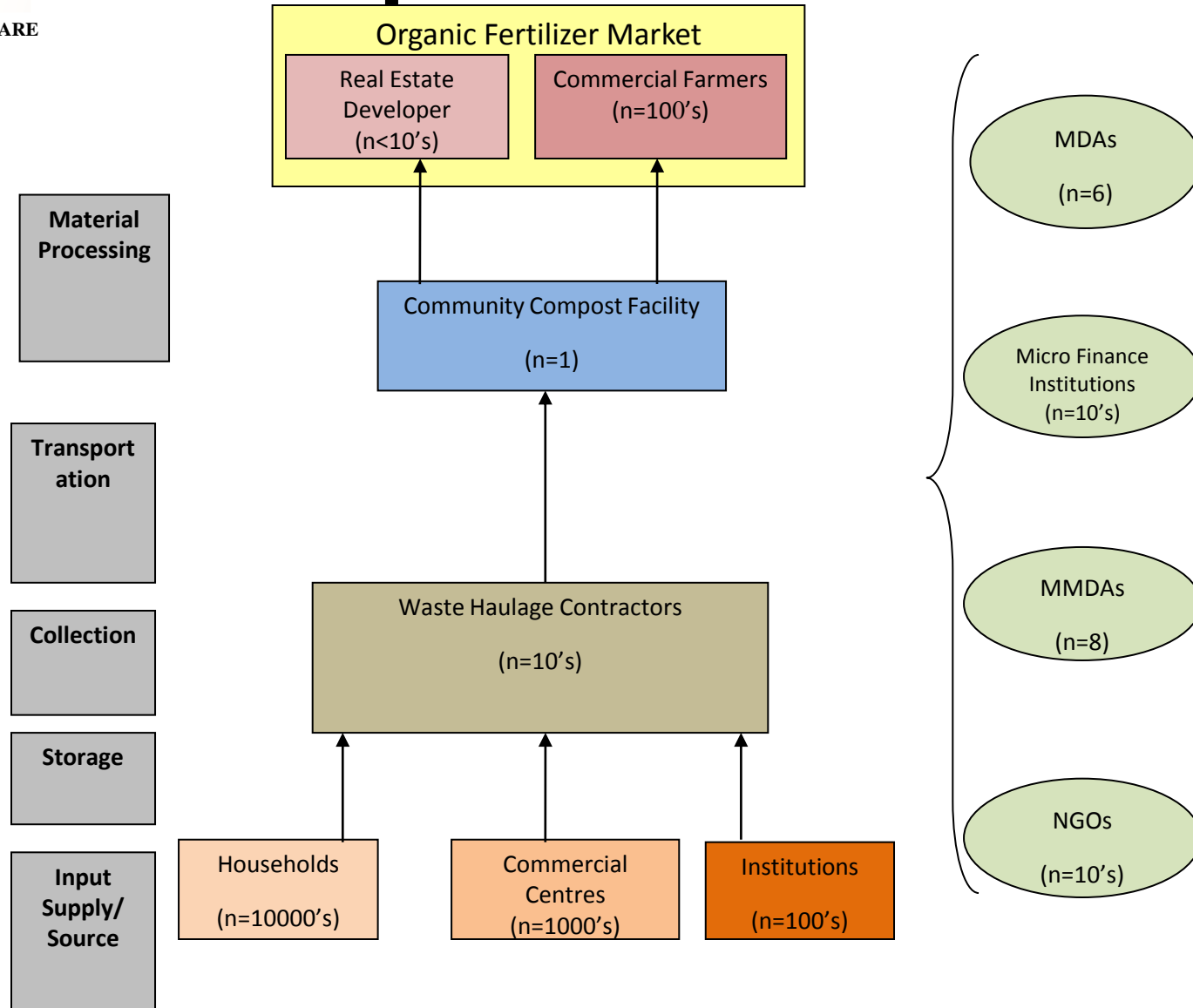
Value chain map for thin film plastics waste





WASTECARE

Compostables value chain map





WASTECARE

Private sector has taken the lead... buy-back centres for thin-film plastics

12 Daily Graphic, Tuesday, June 1, 2010

HM-800ST2 Machine On Offer

Price
USD\$ 85,000



We have in stock a super high speed fully automatic T-shirt bag making machine with Servo-Drive system.
Used for the production of black colour shopping bags
Total Output: 1000 Kilos per day 300 cycles x2 = 600pcs/min

Interested buyers should contact Julie on 054 433 6767

SELL US YOUR PLASTIC WASTE

Bring all your used or waste plastic HDPE water sachet and black shopping bags for CASH
1Kg for 35 pesewas







For more information contact Mr Vinay on 024 472 4432

 **Table 7.7: Performance of Metropolitan Assemblies in IGF for 2006 – 2008**

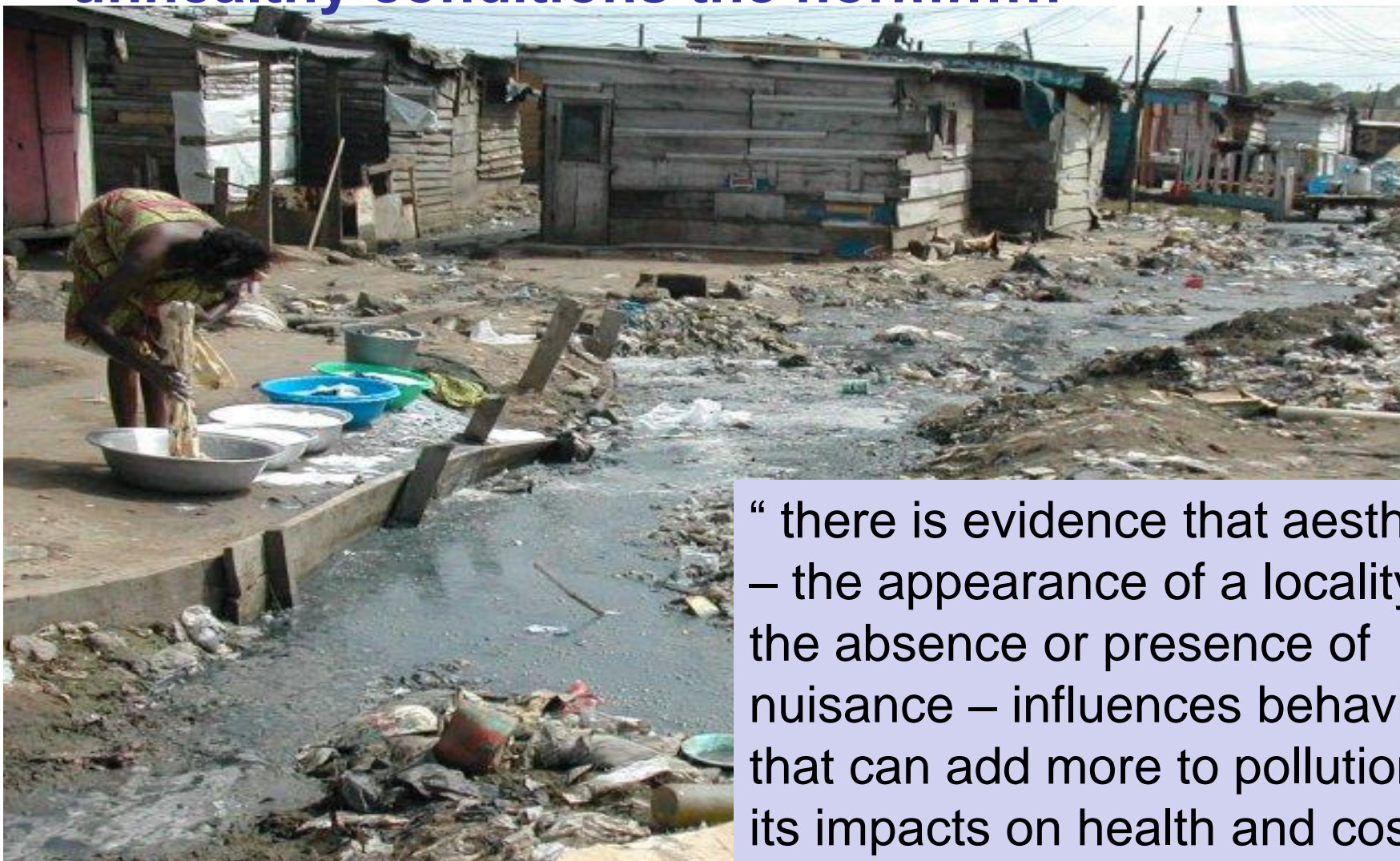
WASTECARE

No.	Metropolitan	2006 IGF (in Gh¢)	Ranking in 2006	2007 IGF (in Gh¢)	Ranking in 2007	2008 IGF (in Gh¢)	Ranking in 2008
1	AMA	7,431,817.96	1 st	10,010,371.68	1 st	11,567,133.39	1 st
2	Sekondi-Takoradi	2,985,579.40	3 rd	9,817,727.80	2 nd	6,692,143.09	2 nd
3	TMA	3,683,524.87	2 nd	3,732,996.60	3 rd	4,124,569.57	3 rd
4	Tamale	88,706.27	5 th	178,639.70	5 th	265,073.49	5 th
5	Cape Coast	210,532.45	4 th	381,898.55	4 th	604,851.03	4 th



WASTECARE

Poor infrastructure-and-services is making unhealthy conditions the norm...!!!



“ there is evidence that aesthetics – the appearance of a locality and the absence or presence of nuisance – influences behaviour that can add more to pollution and its impacts on health and costs”

...NESSAP, MLGRD, 2010



WASTECARE



National Solid Waste Management Workshop, 6 -7 June 2011. British Council, Accra.



WASTECARE

No Routine measurements for performance indicators

No functioning weigh-bridge at disposal site so

What tonnage is this ?



To calculate weight without weigh Bridge....

Volume = ?

Denisty = ?



WASTECARE



National Solid Waste Management Workshop, 6 -7 June 2011. British Council, Accra.

The Ghana Shared Growth Development Agenda (GSGDA) and BCC...

“...a critical development challenge facing the country is the non-alignment of citizens’ life-styles with demands of modernisation, due largely to ignorance, and resulting in self-inflicted vulnerabilities, and therefore the spending of scarce public resources on preventable expenditures. Negative attitudes towards time, work, care of public property, health, education, human rights, safety, reproductive rights, disability, etc need to be tackled head-on to ensure the alignment of the national psyche to the development vision of the country”.